

# ST. FRANCIS

## *Weddings*



*Photo Credit: Suzanne Karp*

### *Congratulations!*

We are delighted you are considering St. Francis Winery & Vineyards for your wedding celebration.

With sweeping vineyard views, classic Tuscan architecture and mission-style bell tower, St. Francis is the gem of Sonoma Valley. A gorgeous mountain backdrop, breathtaking sunsets and gracious hospitality makes St. Francis Winery & Vineyards the perfect setting for your quintessential wine country wedding.

St. Francis Winery is available for a site tour by appointment daily from 10AM-4PM.  
To schedule a visit call 707-833-0255 or email [events@stfranciswinery.com](mailto:events@stfranciswinery.com).

We are looking forward to working with you to create an event you and your guests will never forget!



# Tying the Knot

## WEDDINGS AT ST. FRANCIS WINERY

### CEREMONY & RECEPTION | 200 MAX CAPACITY

St. Francis Winery is a stunning setting for the gathering of family and friends for your special day. Say your vows and celebrate against the backdrop of brilliant sunsets, starlit nights and an unforgettable atmosphere.

### WHY ST. FRANCIS WINERY

- Exclusive use to the venue from 6PM-11PM
- One hour rehearsal the day before your ceremony between 10AM-4PM
- Teakwood tables and market umbrellas for cocktail reception
- Ringing of the St. Francis bell for ceremony recession
- Private Bridal Suite with a complimentary bottle of  
Domaine Carneros Sparkling Wine and artisan cheese platter
- Magnum wine bottle and gold pen for your guestbook table
- VIP wine tasting for wine selection
- 15' x 18' Oak dance floor included
- Two wine barrels for ceremony (upon request)
- Market lighting
- Wooden white folding chairs (up to 200 available; includes setup and breakdown)
- 60" round tables (up to 25 available; includes setup and breakdown)

### BEVERAGES

St. Francis Winery produces a variety of outstanding wines to impress your guests. We are also proud to offer Domaine Carneros Sparkling Wine. We require that all wine is purchased through the Winery. Wine Club Members receive their Wine Club discount on all St. Francis wine purchases. Beer and soft drinks can be purchased through your caterer.

	<b>SATURDAY</b>	<b>FRIDAY &amp; SUNDAY</b>	<b>MONDAY-THURSDAY</b>
<b>APR-OCT</b>	<b>\$11,500</b>	<b>\$9,600</b>	<b>\$7,700</b>

(TENT RESERVATION REQUIRED IN APRIL & OCTOBER)

### APPROVED VENDORS

We have partnered with a selection of trusted professionals available to assist in planning your event at St. Francis Winery & Vineyards. We require the employment of a wedding coordinator/planner.

### FEES & DEPOSITS

To reserve your event date with St. Francis Winery & Vineyards, we require your signed contract and 50% non-refundable deposit of your total facility fee.

### RESTRICTIONS

- Last song must be ½ hour prior to the end of reception
- Due to licensing restrictions, liquor is not permitted



2018-2019

# Approved Vendors

## WEDDING PLANNERS:

### A Dream Wedding

Echo Dawn Wright  
707-486-7432  
a-dreamwedding.com

### CC Events

Chaz Crosier  
707-484-0677  
ccevents.com

### Cole Drake Events

Stephanie Cole | Sarah Drake | Alexis Alexander  
707-304-5921  
coledrake.com

### Denise Kramer Weddings

Denise Kramer  
707-763-2254  
sonoma-napaweddings.com

### Dream A Little Dream Events

Kathryn Kalabokes | Camile Jacinto Hale  
415-641-1124  
dreamalittledreamevents.com

### Lorin Rose Weddings

Lorin Rose  
707-479-8388  
lorinroseweddings.com

### L'Relyea Events

707-955-5035  
lrelyeaevents.com

### Ooh La La Weddings & Events

Lindsey Hintereder | Kaitlyn Finley  
707-206-2400  
oohlalaweddings.com

### Run Away with Me

707-408-0408  
runawaywithme.com

## CATERERS:

### Elaine Bell Catering

707-603-1400  
elainebellcatering.com

### The Girl & the Fig Catering

707-933-3667  
figcaters.com

### Park Avenue Catering

707-793-9645  
parkavecater.com

### Pascaline Fine Catering

707-521-9348  
pascalinefinecatering.com

### Paula LeDuc Fine Catering

510-547-7825  
paulaleduc.com

### Ramekins

707-933-0450  
ramekins.com

## WEDDING INSURANCE:

### WedSafe

877-723-3933  
wedsafe.com

## RENTALS & LIGHTING:

### ATL Events

707-528-3557  
atlevents.com

### Bright Events Rentals

707-940-6060  
brightrentals.com

### Encore Events Rentals

707-722-3152  
encoreeventsrentals.com

### La Tavola Linens

707-257-3358  
latavolalinen.com

### Party, Tents & Events

707-544-4132  
pterentals.com

# Recommended Vendors

## PHOTOGRAPHERS:

### Elle.Jae Photography

415-370-9092  
ellejaephotography.com

### Marc Blondin Photography

707-703-9731  
marcblondinphotography.com

### Suzanne Karp Photography

888-450-8101  
suzannekarp.com

### T.J. Salsman Photography

707-266-8767  
tjsalsmanphotography.com

## DJs & MUSICIANS:

### AMS Entertainment

707-823-7359  
amswinecountry.com

### California Mobile DJ

707-935-1686  
calmobiledj.net

### Wine Country Entertainment

707-965-9862  
winecountryentertainment.com

## OFFICIANTS:

### Reverend Dan Melligan

707-539-8785

### Reverend Lisa A. Joslen

707-538-VOWS (8697)

### Reverend Peadar Dalton

707-939-7613

## FLORALS:

### Bertoli Bridal & Design

707-291-8002  
bertolibridal.com

### Fleurs de France

707-824-8158  
fleursfrance.com

### Meredith Law Design

828-545-5575  
meredithlawdesign.com

### Vanda Floral Design

707-763-9271  
vandafloral.com



# Local Recommendations

## **BAKERY:**

**Patisserie Angelica**  
707-827-7998  
patisserieangelica.com

**Crisp Bake Shop**  
707-933.9999  
crispbakeshop.com

## **SALON:**

**Bella Bridal**  
707-968-7144  
bellabridalnv.com

**It's a Date at the Powder Room**  
707-537-7968  
sonomacountyweddingmakeup.com

**The Beauty Spot**  
707-595-5621  
thebeautyspotsantarosa.com

## **TRANSPORTATION:**

**Beau Wine Tours**  
707-938-8001  
beauwinetours.com

**Napa Valley Tours & Transportation**  
707-251-9463  
nvt.net

**Pure Luxury Transportation**  
707-253-0296  
pureluxury.com

## **TRAVEL:**

**KB's Travel**  
415-847-1706  
kbstravel.net

## **LODGING:**

**Flamingo Conference Resort & Spa**  
707-545-8530  
flamingoresort.com  
7.0 mi from the Winery

**El Dorado Hotel & Kitchen**  
707-996-3030  
eldoradosonoma.com  
12.9 mi from the Winery

**Fairmont Sonoma Mission Inn & Spa**  
707-938-9000  
fairmont.com/sonoma  
10.6 mi from the Winery

**Gaige House A Four Sisters Inn**  
707-935-0237  
gaige.com  
6.7 mi from the Winery

**Hyatt Regency Sonoma Wine Country**  
707-284-1234  
sonomawinerycountry.regency.hyatt.com  
10.3 mi from the Winery

**Kenwood Inn & Spa**  
707-833-1293  
kenwoodinn.com  
3.3 mi from the Winery

**The Lodge at Sonoma Resort & Spa**  
800-468-3571  
marriott.com  
16.0 mi from the Winery

**MacArthur Place**  
707-938-2929  
macarthurplace.com  
13.6 mi from the Winery

**Ramekins The Inn**  
707-933-0450  
ramekins.com/the-inn  
12.4 mi from the Winery

**Sonoma Rosso**  
sonomarosso.com  
1 mi from the Winery



# *Frequently Asked Questions*

## **Can we purchase extra time?**

Yes, an additional hour may be purchased for \$1,000.

## **Does St. Francis require a wedding planner?**

Yes, we require couples to hire a mid-range or full-service wedding planner/coordinator who will be on-site the day of the event. We require the name of the planner/coordinator you have chosen within 30 days of signing the contract. Your planner/coordinator must provide schematics, timeline and a walk-through with our Event Manager 30 days prior to the event. Day of planners/coordinators do not satisfy our requirements.

## **Do I have to select my vendors from your Approved Vendors list?**

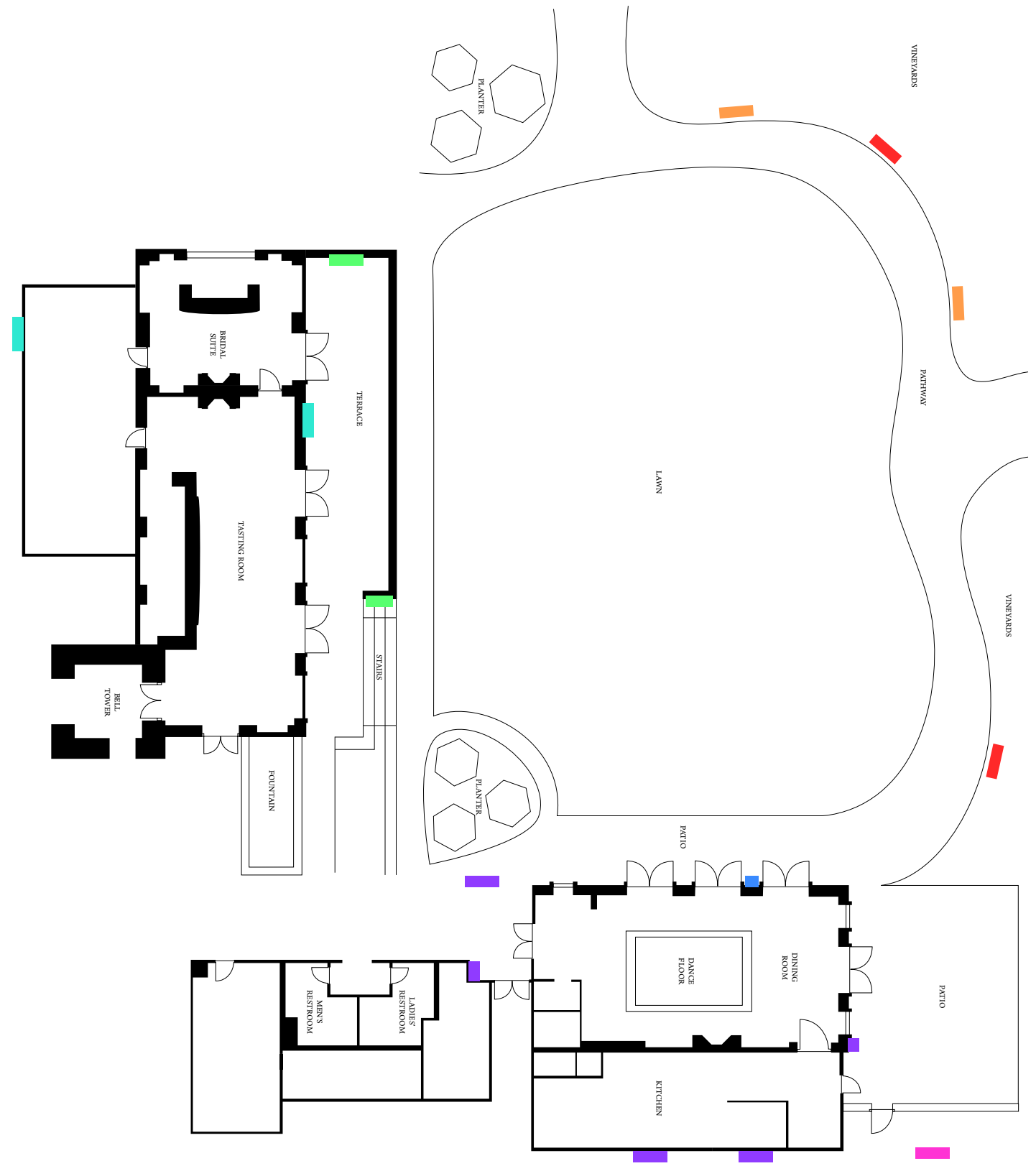
Yes. We require you to select your caterer and wedding planner/coordinator from our Approved Vendors list.

## **What limitations exist for music?**

For weddings that end at 11PM, the last song is at 10:30PM. If overtime is purchased, the last song is at 11:30PM. Due to Sonoma County ordinances, music must end by 11:30PM.

## **How do I reserve a date?**

Contact our Events Department via email or phone and we will check our calendar to see whether your requested date is available. If the date is available, a 50%, nonrefundable deposit is required to secure your wedding date.



- 1 LE17
- 1 LC21
- 1 LC25
- 1 LC23
- 1 LB12
- 1 LB13
- 1 LD42

SCALE 1/8" = 1'0"